

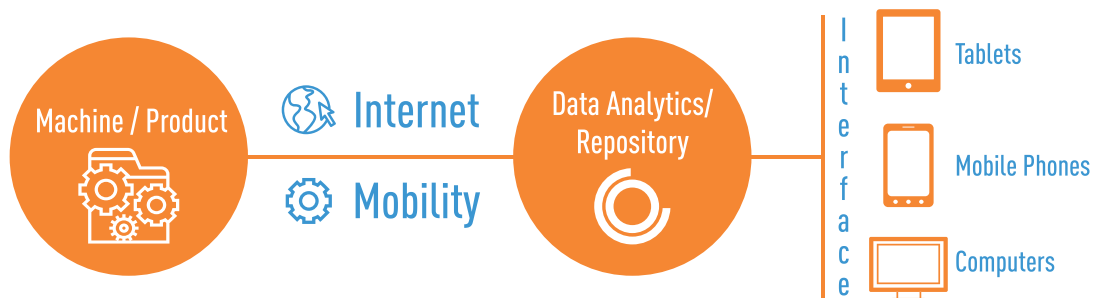
# Green IoT Solutions



Techsource Europe AB is based out of Sweden and provides innovative IoT solutions. We specialize in Industrial IoT, Energy-related applications and E-health. Our condition monitoring solutions are based on the latest wireless technologies, modular, robust and ready-to-use. This ensures, we straightaway impact your bottom-line.

Are you ready to take your business to the next level? Then, get in touch with us today!

{ **TECHSOURCE** }  
we make IT human



Techsource provides IoT solutions for a greener world. By using the latest technologies, we build sustainable systems for our customers. Our solutions are complete and ready for use. An IoT solution consists of fixed inputs provided by sensors, or dynamic inputs such as time-stamp, communication to the cloud or server, analysis of data and presentation for further actions which are either automatic or manual. We can also provide parts of this chain on request.



All our solutions place the human experience at the centre, or the Pay-off of our solutions is we make IT human. This approach helps both our customers and their end-users.

Our focus areas are the Industry, the Energy sector, and E-health. Under Industry and Energy we focus on Conditioning Monitoring and Energy Saving solutions. Under E-health, we focus on coordinating information from existing systems and making them user-friendly.

**Internet of Things, or IoT, is a tool for extracting information, processing the information, drawing conclusions from the same, and finally taking relevant action.**

It is a smart way of utilizing existing information to improve processes and products, increase efficiency in R&D, production, and logistics. But not just that, the most important aspect, which affects all of us and our future, is the environmental aspect, IoT reduces energy consumption.

**Techsource provides solutions based on a proprietary Modular concept. Our solutions are globally recognized and have won the IoT World Cup 2017.**

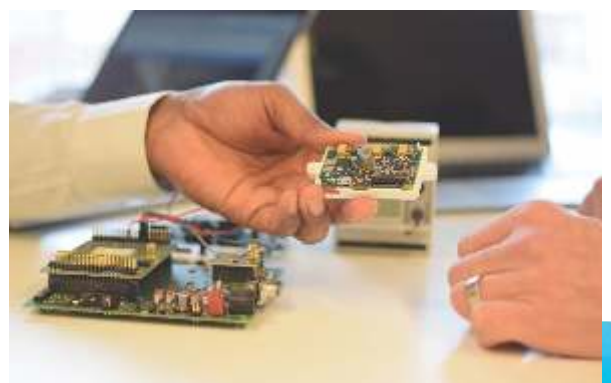
Our products are industrial-grade and hence long-lasting, which is more sustainable approach.

Our products include high-precision sensing device for high-quality output and is ideal for business-critical applications.

All our solutions are wireless, modularly built, scalable, and ready-to-use. It is important for us that our products contribute to our customers' success and impact their bottom-line.

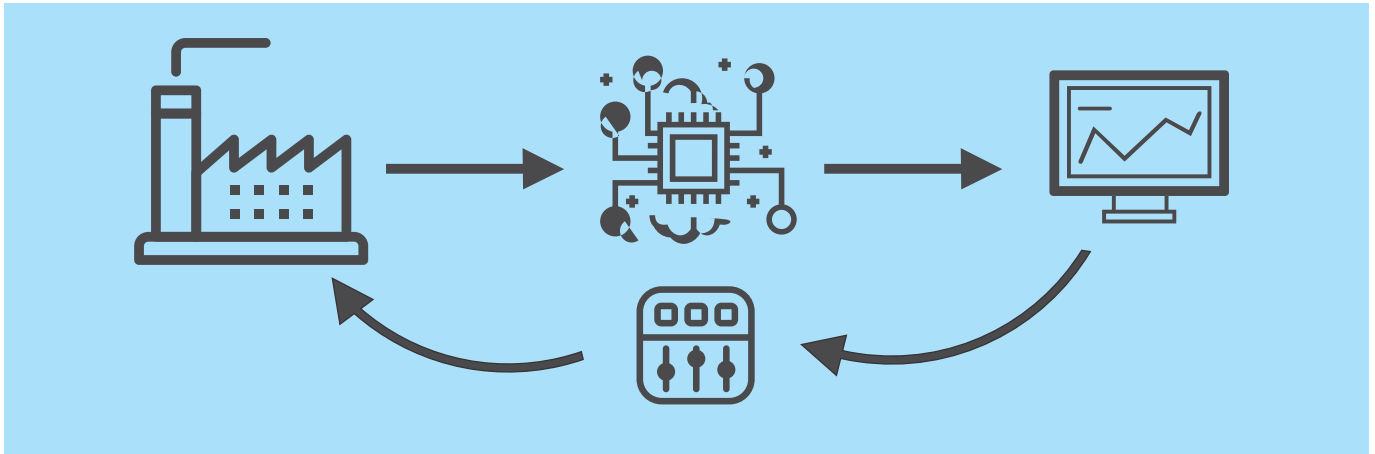
We use various wireless communication protocols such as BLE, WiFi, and Sigfox, depending on the customer's needs.

**We are ready to go - are you?**



## C 17 is a tool for analysing your energy consumption.

By optimizing your consumption, you save energy, which is a significant benefit to your operating costs, as well as the environment.



C17 is an analytical tool that measures and analyzes energy consumption at your plant, stores it in the cloud, and then displays it in a dashboard. You can then use this information to automatically or manually adjust your power system and make it more efficient.

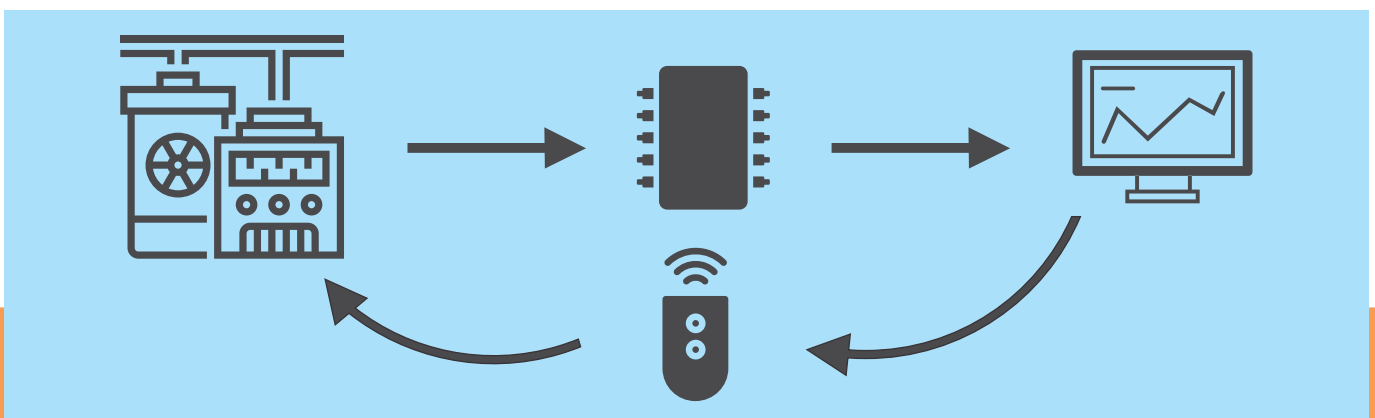
The C17 is mounted in your sub-distribution box on the standard DIN Rail and communicates via cable or wireless with your local server or a server on the cloud. The data can be presented either on your desktop or mobile phone.

### Key Highlights

- Reduce energy consumption, reduce your carbon footprint
- Lower your fixed and moving costs for power consumption
- Monitor your industry energy needs completely or partially
- Use several meters in parallel, for multiple groups or multiple engines
- Modular design for easy expansion when your power needs change
- Designed for installation in 400V network
- Handles currents up to 2000A
- Repayment period of 1-4 years depending on size of your plant.

## V13 IoT tool for Condition Monitoring of machines and engines

Using V13, you can collect information on when it is time to service or maintain your equipment, and hence avoid downtime!



The V13 Vibration Monitoring device effectively measures and analyses changes in the vibration pattern and indicates when service or maintenance personnel should revisit the equipment. This way, the cost of service downtime or equipment failure is avoided. The V13 can be customized to fit small, handheld, vibration-sensitive equipment or large, outdoor, infrastructure assets such as bridges, railway tracks, trains, windmills and heavy machinery.

## Key Highlights

- Monitor Industrial equipment for vibration changes
- Supports wired and wireless systems
- Continuous condition monitoring
- Robust and high precise sensing
- Technology is suited for multiple industries

## Clients & Partners



Industrial IoT



Connected Machines



Connected Vehicles



Connected buildings



E-Health



Smart Grid

Techsource Europé AB is a privately-held company and a pioneer in IoT. Techsource was quick to realise the potential in improved and automated communication with the human experience as the focus. Techsource works closely with partners from all over the world.

# { TECHSOURCE }

we make IT human

Get in touch: [www.techsource.io](http://www.techsource.io)

[info@techsource.io](mailto:info@techsource.io), +46 10 150 21 44